

VALUING RESOURCES, REDUCING WASTE

Waste Fee Regulation as of 1st April 2026

#fänkvirun



SUMMARY

Foreword

03

Together for
Sustainable Waste
Management

06

A collective success
since 2021

07

Why will fees be
adjusted in 2026?

08

New fees for 2026

09

Services at
a glance

12

How to limit the
impact of the fee
increase

14

The new Resource
Centre in Munsbach

16

Your commune
at your side

19

Conclusion

19





**Minister of the Environment,
Climate and Biodiversity,
Serge Wilmes**

Resource management is one of the most important pillars of transitioning to a circular economy. Every individual's efforts contribute to better resource protection and the achievement of a more sustainable society. The support that municipalities and intermunicipal syndicates provide to citizens plays a crucial role in this transition.

SIAS's zero-waste strategy aligns with the national strategy's objectives, which prioritise resource conservation, waste prevention, and reduction.

The 'polluter pays' principle has proven effective in encouraging citizens to better sort their household waste. This principle raises awareness about waste management through a balanced approach. Once implemented, it paves the way for better daily resource management by holding everyone accountable for their environmental impact.

Our aim is to encourage the citizens and municipalities of SIAS to continue their successful initiatives and to provide our full support for their resource recovery measures, with the common goal of supporting the transition to a circular economy.



**SIAS President,
Claude Marson**

*Together, we can promote
sustainable development
in our region.*

When our SIAS syndicate adopted the 'Zero Waste' strategy in 2021, we set ourselves ambitious goals. We knew that some of our approaches were pioneering in Luxembourg.

Today, this innovative approach is setting a precedent. Recognised as a 'flagship project' by the Klima-Agence, it is attracting attention beyond our borders and proving that an ambitious resource management policy can be implemented at communal and inter-communal levels. This success is, however, above all due to you, dear citizens, who have agreed to change your daily waste management habits. Such convincing results require changes in purchasing habits, rigorous sorting of resources, and the use of communal infrastructure to return resources to the circular economy.

However, this success also presents us with new challenges. Treatment costs are rising, and environmental requirements are becoming more stringent. The new tax regulations address these issues while maintaining the fundamental 'polluter-pays' principle. In other words, residual waste is charged by weight, meaning that each household is responsible for its own bill. This principle is fair and encourages all households to reduce waste.

From an environmental point of view, we can therefore draw a positive conclusion, and, at the same time, the money saved by the communes can be invested in projects that benefit the community.

SIAS remains the competent partner for its member communes and is firmly committed to achieving these objectives and supporting citizens throughout the process.

Dear citizens,

The circular economy has never been more vital than it is today. As resources become increasingly rare, it is our collective responsibility to reintroduce them into the cycle wherever possible and to minimize residual waste. With an effective strategy, we can not only protect the environment but also make a meaningful contribution to combating climate change. Every piece of waste avoided and every resource reused is a step forward.

For many years, the commune of Schuttrange has been firmly committed to a sustainable resource policy. Together with the SIAS communes of Contern, Niederanven and Sandweiler, we have achieved a remarkable result: between 2021 and 2024, residual waste per inhabitant was reduced by 33%. In Schuttrange, the decrease even reached 36%. This is a success we can all be proud of—and one that should inspire us to go further. Our ambition is clear: to continue reducing residual waste until, one day, almost nothing ends up in the grey bin. We call this vision our 'Zero Waste Strategy'

The 'Sorting Guide', which is currently being updated, will support you in separating your waste correctly and in better understanding the different collection services. Our goal is to make recycling as simple and convenient as possible, so that it becomes a natural everyday gesture—a habit that, without much effort, effectively contributes to environmental protection. Every properly sorted package, every recycled resource, brings us a little closer to our goal.

You will also have the opportunity to influence the amount of your bill and possibly reduce it. The evolution of prices and the management of our resources directly affect our taxes. That is why an adjustment of the taxes related to resource treatment will be necessary as of April 1, 2026.

It is essential to preserve the polluter-pays principle as well as the structure of the taxes. This brochure gives you an overview of the changes in taxes and shows you how you can reduce your costs.

We count on your commitment: together, we can achieve a lot. Thank you for supporting our waste management strategy!



Claude Marson
Conny Ney
Serge Eicher

Together for Sustainable Waste Management

In 2021, the communes of Contern, Niederanven, Sandweiler and Schuttrange introduced the **Zero Waste Strategy** in collaboration with the Environmental and Nature Protection Syndicate SIAS. By introducing this new waste collection and pricing system, our communes have taken a significant step towards more sustainable waste management.

Thanks to your efforts, the results are visible:



Less residual waste per resident.



Strong progress in selective sorting and composting.



The 'polluter-pays' principle is effective: households that reduce their residual waste are rewarded for protecting the environment.

Our progress marks an important step toward a healthier environment and smarter resource use. To continue advancing and fulfil legal obligations, a fee adjustment will take place in 2026.



Good to know

The 'polluter pays' principle

A fair system in which everyone pays according to how much waste they produce. Introduced by the European Union in 1986, this principle promotes waste reduction and proper recycling.

A collective success since 2021

Thanks to the dedication of our communes' residents, the amount of residual waste has dropped significantly – from 133 kg to 90 kg per person per year, which is a 33% reduction over five years. This equates to approximately 2,500 tons less residual waste across the four communes, which is the equivalent of 500 dump trucks stretching over 2.5 kilometers! Every action matters: reducing waste, sorting, and composting all contribute to this remarkable and unique achievement in Luxembourg.



Why these results matter?

Each kilogram of waste avoided means fewer resources are burned, lower CO₂ emissions, cleaner air, and greater savings for everyone. It also means more materials can be recovered to create new products, more local employment opportunities, and a healthier environment for all.

133 kg



90 kg

of residual waste
per inhabitant.

= - 33 %
in 5 years



The four communes
produced **2,500 tons**
less residual waste*
over a period of four years.



Selective collection
Paper, glass, packaging and
organic resources.

*based on the total population

Thank you for your efforts!



Why will fees be adjusted in 2026?

Regulations require our communes to cover the full cost of waste management through user fees. To maintain continuity, quality, and efficiency, fees will be updated as of 1st April 2026.

Several factors explain this adjustment:

1



General inflation

As in all sectors, costs for collection, transport, and infrastructure rise each year.

2



Rising treatment costs

Incineration and overall waste management are becoming more expensive due to stricter environmental regulations.

3



Punctual increase in the collection of organic resources, glass and paper/cardboard.

4



Sustainable investments

Communes are modernising infrastructure and developing new solutions to enhance sorting, recycling, and waste prevention.

New fees for 2026 – a necessary adjustment for a sustainable service

In 2026, the communes of SIAS: Contern, Niederanven, Sandweiler and Schuttrange will introduce a new fee schedule for resource management. In the commune of Schuttrange, these changes will come into effect on 1st April.

Fees 2026

BASE FEE €60
per household /year

RESOURCE CENTRE

Access for households free

Access for businesses €840 /year

RESIDUAL WASTE BIN

1st bin
120 L free
240 L €60
1100 L €660

Additional bin €60 - €660* /year

Weight fee €1,70 /kg
A minimum charge of €8.50 applies to collections weighing 5 kg or less.

Residual waste bags €15 /bag

ORGANIC WASTE BIN

1st bin
120 L free
240 L €60

Additional bin €60 - €120* /year

GLASS BIN

120 L €60
240 L €120
1100 L €660

PAPER/CARDBOARD BIN

120 L €60
240 L €120
1100 L €660

*The price varies according to the container's capacity.



Concrete examples

Example A

A household of 4 people with a current average of ~90 kg per person per year = 360 kg for 4 people per year.

<div><div>INVOICE</div><div><div>Basic tax</div><div>€36</div></div><div><div>Container</div><div>(240 L)</div><div>€36</div></div><div><div>Weight</div><div>(360 kg × €0,90)</div><div>€324</div></div><div><div>TOTAL:</div><div>€396</div></div></div>	<div><div>INVOICE</div><div><div>Basic tax</div><div>€60</div></div><div><div>Container</div><div>(240 L)</div><div>€60</div></div><div><div>Weight</div><div>(360 kg × €1,70)</div><div>€612</div></div><div><div>TOTAL:</div><div>€732</div></div></div>	<div><div>INVOICE</div><div><div>Basic tax</div><div>€60</div></div><div><div>Container</div><div>(240 L)</div><div>€60</div></div><div><div>Weight</div><div>(270 kg × €1,70)</div><div>€459</div></div><div><div>TOTAL:</div><div>€579</div></div></div>
--	--	--

Invoice with the previous system

Invoice with the new system and an average amount of residual waste

Invoice after 25% reduction (270 kg instead of 360 kg)

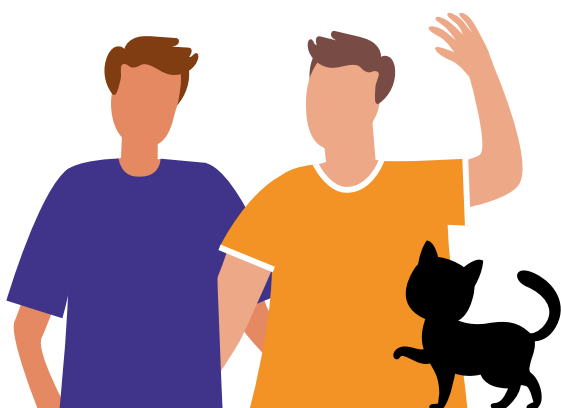


Example B

A household of 2 people with a current average of ~120 kg per person per year = 240 kg for 2 people per year.

INVOICE									
Basic tax	€36								
Container (120 L)	€0								
Weight (240 kg × €0,90)	€216								
TOTAL:	€252								

Invoice with the previous system

 | INVOICE | | | | | | | | | | |----------------------------|-------------|--|--|--|--|--|--|--|--| | Basic tax | €60 | | | | | | | | | | Container
(120 L) | €0 | | | | | | | | | | Weight
(240 kg × €1,70) | €408 | | | | | | | | | | TOTAL: | €468 | | | | | | | | | Invoice with the new system and an average amount of residual waste | | INVOICE | | | | | | | | | | |----------------------------|-------------|--|--|--|--|--|--|--|--| | Basic tax | €60 | | | | | | | | | | Container
(120 L) | €0 | | | | | | | | | | Weight
(180 kg × €1,70) | €306 | | | | | | | | | | TOTAL: | €366 | | | | | | | | | Invoice after 25% reduction (180 kg instead of 240 kg) |

These examples show that, even with the new fees, you can significantly reduce your bill by limiting the amount of waste you put in your grey bin. The most effective thing you can do is use your bin for organic resources. **Every kilo of waste diverted from your grey bin means savings for you and a smaller environmental impact.**

Services at a glance

What stays the same

1

**WEIGHT < 5 KG
= €8,50**



Any residual waste collection **under 5 kg** is billed at the 5 kg rate, as technical systems cannot register smaller amounts.

2



The collection of other fractions (paper/cardboard, glass, and organic resources) remains **free of charge**. This also applies to Valorlux bags.

3



All households will continue to have **free access** to the Munster Resource Centre.

4



Your bill still depends on **your behaviour**: **the less you throw away and the better you sort, the less you pay!**

What will change

Reduced frequency of grey bin collections

Thanks to your sorting efforts, residual waste bins were collected an average of fewer than twice per month in 2024 (between 1.64 and 1.98 times per household per month, depending on the commune). This improvement means that, starting on 1 January 2026, the collection frequency can be reduced to twice a month, which helps to limit the increase in collection costs while maintaining service quality. It also reduces the carbon footprint of garbage truck journeys. **Fewer trips mean less fuel consumption and therefore lower CO₂ emissions.**

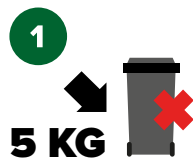


RESIDUAL WASTE COLLECTIONS IN 2024				
COMMUNE	Contern	Niederanven	Sandweiler	Schuttrange
NUMBER OF COLLECTIONS	39 764	57 883	29 173	31 557
AVERAGE COLLECTIONS PER MONTH	3 314	4 824	2 431	2 630
NUMBER OF BINS	1 675	2 497	1 462	1 607
FREQUENCY OF BIN COLLECTION PER MONTH PER HOUSEHOLD	1,98	1,93	1,66	1,64



How to limit the impact of the fee increase

Although fees are increasing, there are steps you can take to minimise their impact on your bill. Here are some simple yet effective measures you can implement:



Sort effectively and optimise grey bin use

Check your bill: if you regularly pay for 5 kg of waste but never reach this weight, you may be putting your grey bin out too often. Wait until it is full before putting it out.



Avoid food waste

Almost a third of all food produced ends up in the bin. You can reduce waste and save money by planning meals, storing food properly, and getting creative with leftovers. Practical tips and anti-waste recipe ideas can be found at www.antigaspi.lu/rotschlei/.



Reduce unnecessary purchases

Every product you don't buy saves you money and reduces waste. Before buying something, ask yourself: ***"Do I really need this?"***



Choose reusable or deposit-based items and avoid over-packaging

Using reusable containers instead of single-use packaging, buying in bulk instead of buying over-packaged products, and using durable tableware instead of disposable items all reduce both waste and long-term expenses. Prioritise quality, durability and repairability over cheaper, lower-quality items.

5

**Compost as much as possible**

The commune of Schuttrange offers a subsidy towards the cost of buying an individual compost bin.

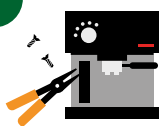
6

**Improve the sorting process even further**

More precise sorting means that less residual waste is incinerated and more materials are recovered (glass, paper, organic resources). Use your bio-bin for organic resources – if you don't have one yet, request one from your commune.

[Sorting guide](#)


7

**Repair before buying new**

Repair Cafés help you fix your devices and items for free. These events are regularly organised in our communes.

8

**Choose second-hand**

The Munsbach Resource Centre's free second-hand shop allows you to give away and collect items.

These actions create a double saving:

You spend less by buying better and pay less for your waste.



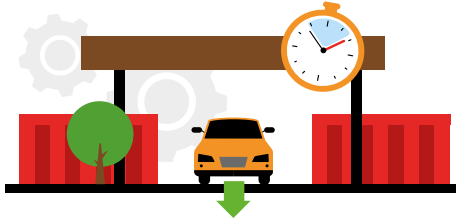
The new Resource Centre in Munsbach – A pioneer for the circular economy



Evolving requirements for resource management and environmental protection necessitate the modernisation of our infrastructure. To provide forward-looking services, SIAS is investing in a new Resource Centre in Munsbach, which will make our region a role-model for the circular economy.

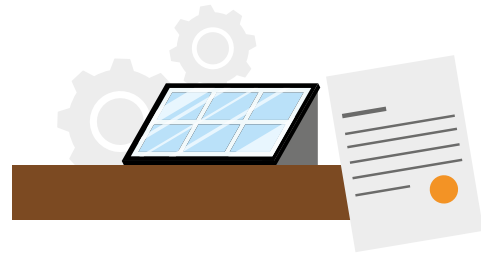
The new centre will be more than just a collection point; it will be a vibrant space dedicated to circularity and sustainability. In line with circular-economy principles, the building will additionally accommodate the new SIAS administrative headquarters.

Designed in accordance with the Grand-Ducal regulation of 15 May 2025 on the planning and management of Resource Centres, the project exceeds legal requirements by providing expanded services and innovative solutions:



User comfort

Users benefit from easy and secure access, shelter from the weather, and reduced waiting times through improved flow organisation.



Low carbon

Installation of PV panels on the roof, a wooden structure, and low-carbon certification (LCBI) for the administrative building.



Repair and reuse

Dedicated spaces will allow items to be repaired and given a new lease of life instead of being thrown away.



Biodiversity protection

Nature-oriented development and protection of local species, with green roofs and façades boosting biodiversity and the urban climate.

New services at your disposal

The centre will provide spaces to develop innovative services that promote reuse, sharing, and repair. Partnerships with local and regional organisations will expand the services and create sustainable synergies, such as:

- ▶ Permanent Repair Café
- ▶ Expanded second-hand shop
- ▶ Tool-lending and exchange services



Good to know

When to take the bins out

Please place your bins on your property, not on the pavement. Additionally, do not put them out too early; the ideal time is from 7 p.m. on the evening before collection.



Campaign 'Këmmert
iech ëm ären Dreck'



Did you know?

Disposing of just 1 kg less residual waste per week could save you up to €88.40 over the course of a year.



Your commune at your side

The price adjustment may have a particularly significant impact on certain households such as large families, parents with young children and elderly people. Your local commune can support you with financial assistance to help you reduce your waste and lower your bill.

- ▶ Financial assistance for installing an individual compost bin
- ▶ Financial assistance with nappies and other hygiene products
- ▶ Financial assistance for repairing a household appliance
- ▶ Financial assistance for replacing the battery of an electric bicycle

Conclusion

Since its introduction in 2021, the Zero Waste Strategy has proven its effectiveness, resulting in less residual waste, better sorting, and fairer billing. The 2026 fee adjustment ensures sustainable service quality while meeting environmental and legal requirements. Thanks to the polluter-pays principle, you remain in control of your bill: ***'The more you sort and reduce, the more you save.'***

We would like to thank all residents for their ongoing commitment. Together, we are moving towards **more sustainable, fairer, and more responsible communes.**





#fänkvirun

